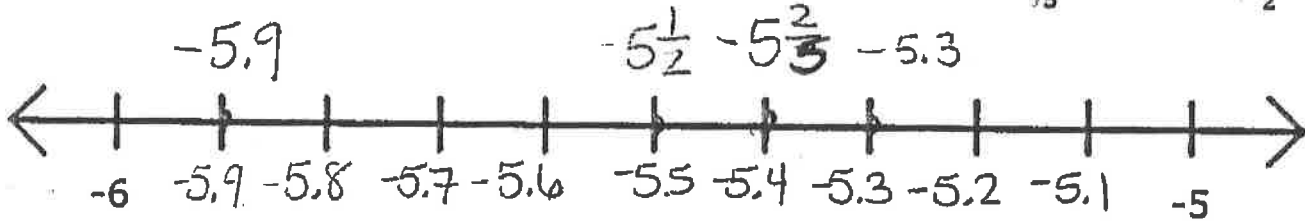


Name Key Date _____ Period _____

Unit 1 Review (Advanced)

1. Order the following numbers on the number line: -5.4 -5.5
 $-5\frac{2}{5}$ -5.3 $-5\frac{1}{2}$ -5.9



Write each fraction or mixed number as a decimal. Be sure to use bar notation if the decimal is a repeating decimal.

$0.\overline{54}$ 2. $\frac{6}{11}$ $\begin{array}{r} .5454 \\ 6.0000 \\ -55 \\ \hline 50 \\ -44 \\ \hline 60 \\ -55 \\ \hline 40 \end{array}$ 5. $5\frac{8}{15}$ $\begin{array}{r} .533 \\ 15 \overline{) 8.000} \\ -75 \\ \hline 50 \\ -45 \\ \hline 50 \\ -45 \\ \hline 5 \end{array}$
 -3.25 3. $-3\frac{1}{4}$ on the FDP chart -2.125 6. $-2\frac{1}{8}$ on the FDP chart

1.6 4. $1\frac{3}{5}$ on the FDP chart -7.35 7. $-7\frac{7 \times 5}{20 \times 5} = \frac{35}{100}$

Write an integer to represent each piece of data.

-15 8. A temperature decrease of 15 degrees

-4 9. The opposite of 4

-30 10. Descending 30 meters

+9 11. $|-9|$

-3 12. Shortening a piece of wood by 3 feet

-7 13. $-|-7|$

+15 14. A gain of 15 yards on a football penalty

15. Write the following in order from least to greatest.

$$\begin{array}{c}
 -4\frac{1}{3}, 3.25, \frac{24}{9}, -4\frac{1}{4}, 2.6 \\
 -4.3 \quad 2.6 \quad -4.25 \\
 \hline
 -4\frac{1}{3}, -4\frac{1}{4}, 2.6, \frac{24}{9}, 3.25 \\
 -7.45, -7.453, -7\frac{1}{2}, -7\frac{1}{5}, -7.8 \\
 -7.5 \\
 \hline
 -7\frac{4}{5}, -7\frac{1}{2}, -7.5, -7.453, -7.45
 \end{array}$$

Fill in the blanks with $<$, $>$, or $=$ to make a true sentence.

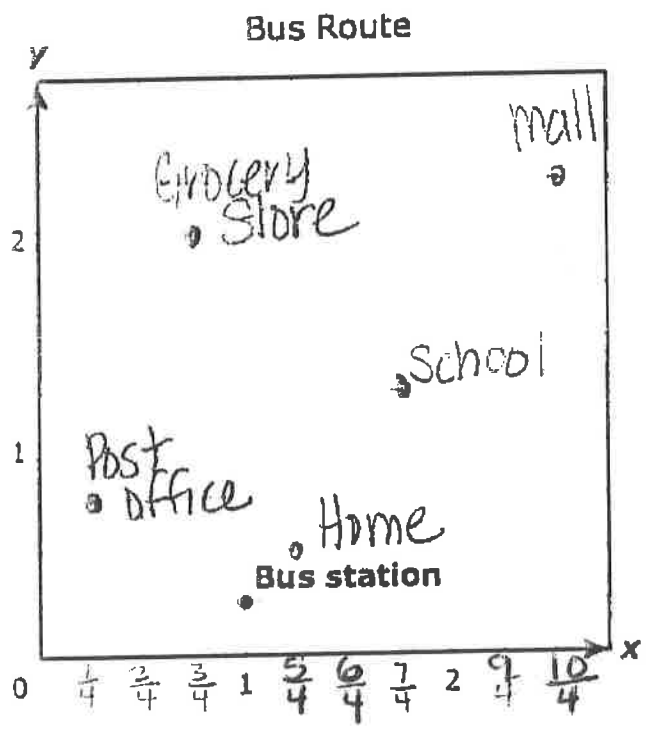
16. $-\frac{1}{5} \stackrel{-0.2}{=} -0.2$

18. $-4 < -2$

17. $-5\frac{1}{2} < -5.05$

19. $|-8| > -8$

20. Place the following landmarks on the grid below using the given coordinates.



- School $(\frac{7}{4}, \frac{5}{4})$ ✓
- Grocery Store $(\frac{3}{4}, \frac{8}{4})$
- Post Office $(\frac{1}{4}, \frac{3}{4})$ ✓
- Home $(\frac{5}{4}, \frac{2}{4})$
- Mall $(\frac{10}{4}, \frac{9}{4})$

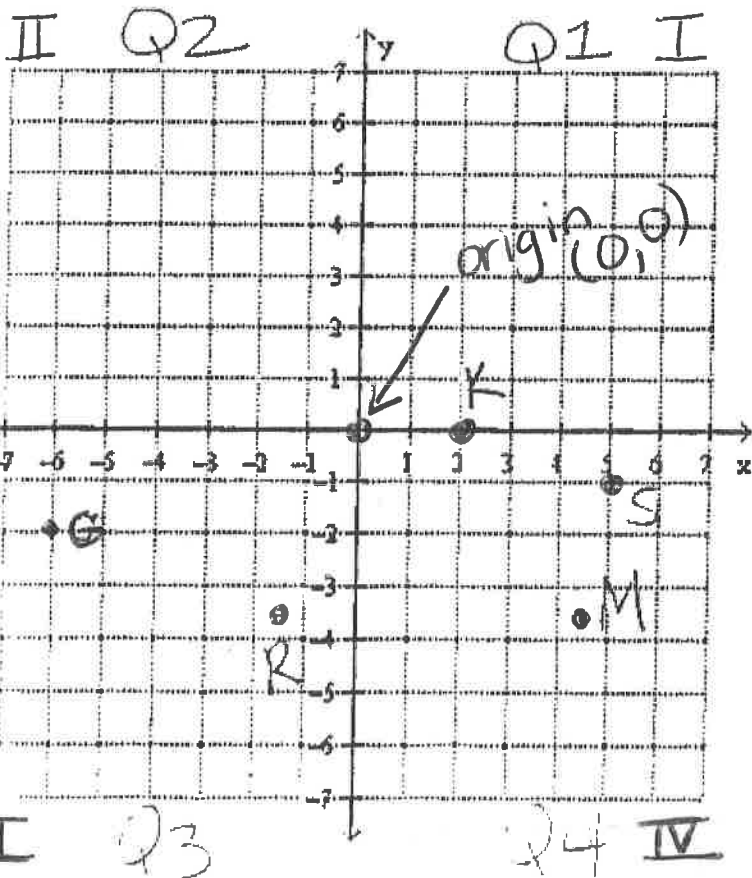
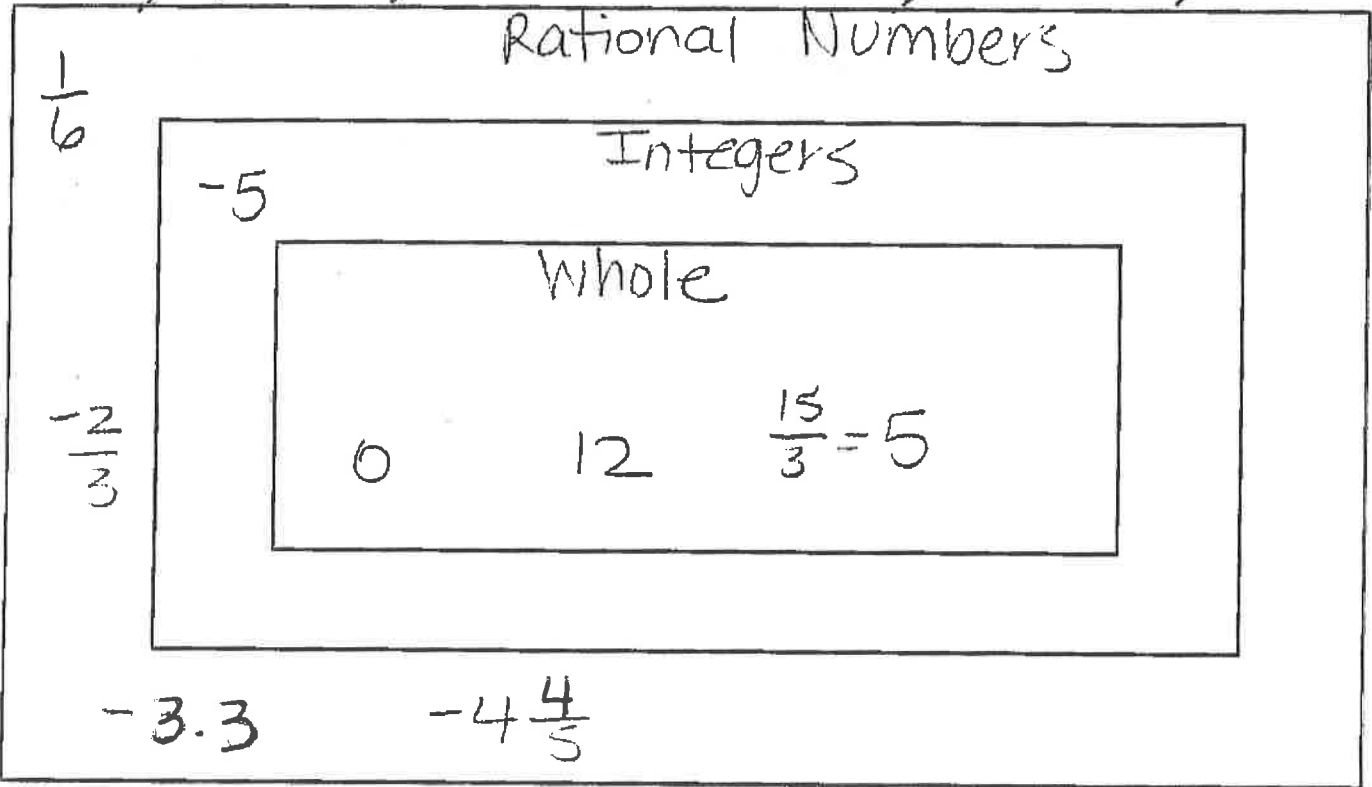
21. The AVID classes sold sno-cones at all four lunches on Friday to raise money for a field trip to Texas A&M. They used $3\frac{1}{2}$ gallons of Tiger's Blood, $3\frac{3}{4}$ gallons of strawberry syrup, 3.3 gallons of grape syrup and 3.2 gallons of orange syrup. List the flavors in order from the greatest to the least amount sold.

Tiger's Blood, Grape, Strawberry, Orange

22. Label the subsets of numbers correctly and then classify (place) the following numbers into the most accurate subset of numbers.

Integers	Whole Numbers	Rational Numbers
----------	---------------	------------------

~~$\frac{1}{3}$~~ ~~-5~~ ~~$-\frac{2}{3}$~~ ~~-3.3~~ ~~\emptyset~~ ~~$-4\frac{4}{5}$~~ ~~12~~ ~~$\frac{15}{3}$~~



23. Label the four quadrants and the origin on the grid. *use Roman numerals please*

24. What are the coordinates of point G? $(-6, -2)$

25. Place point M at $(4\frac{1}{2}, -3\frac{1}{2})$. ✓

26. Place point K at $(2, 0)$. ✓

27. Place point S at $(5, -1)$. ✓

28. Place point R at $(-1.5, 3.5)$