

Unit 1 Review (On-Level)

Write each fraction or mixed number as a decimal. Use bar notation if the decimal is a repeating decimal.

Examples:

$$\frac{9}{20} = 20 \overline{)9.00}^{.45}$$

$$\frac{7}{12} = 12 \overline{)7.000}^{.58\bar{3}}$$

0.54 1. $\frac{6}{11}$

$$\begin{array}{r} 0.545 \\ 11 \overline{)6.000} \\ \underline{-55} \\ 50 \\ \underline{-44} \\ 60 \\ \underline{-55} \end{array}$$

6.53 4. $5\frac{8}{15}$

$$\begin{array}{r} 0.5\bar{3} \\ 15 \overline{)8.000} \\ \underline{-75} \\ 50 \\ \underline{-45} \\ 50 \\ \underline{-50} \end{array}$$

-3.25 2. $-3\frac{1}{4}$

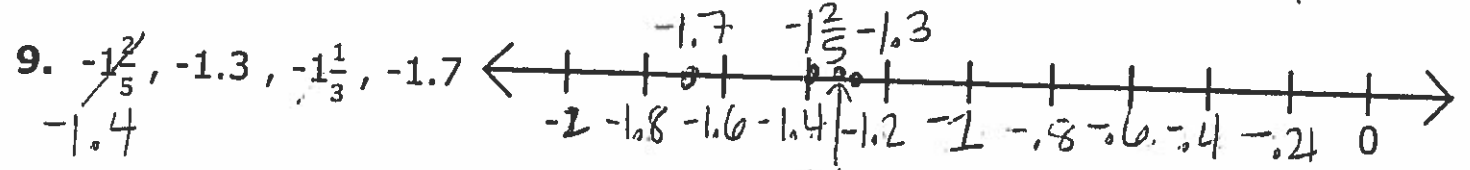
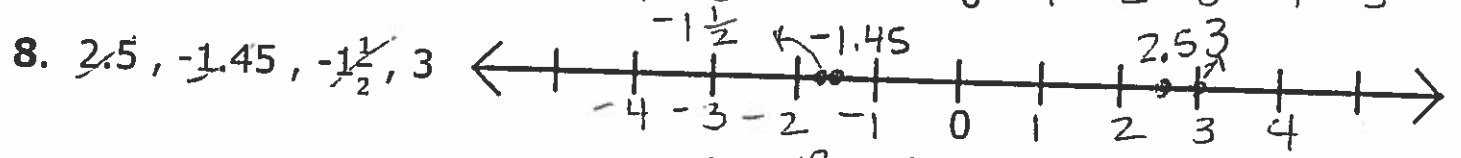
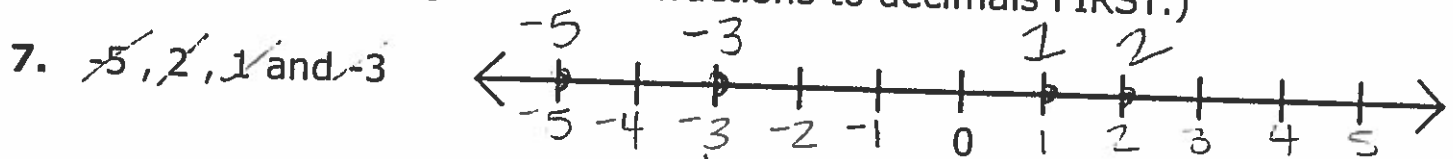
-2.125 5. $-2\frac{1}{8}$

1.6 3. $1\frac{3}{5}$

-7.35 6. $-7\frac{7}{20}$

$$\begin{array}{r} 0.35 \\ 20 \overline{)7.00} \\ \underline{-60} \\ 100 \\ \underline{-100} \end{array}$$

Order the following numbers from least to greatest on the number line. (Be sure to change all of the fractions to decimals FIRST.)



Fill in the blanks with $<$, $>$, or $=$ to make a true sentence.

10. $-\frac{12}{5} = -2.4$ $\underline{=}$ -0.2

13. $-4 \underline{<} -2$

11. $2\frac{1}{5} = 2.2$ $\underline{<}$ 2.3

14. $3.35 \underline{<} 3\frac{7}{8} = 3.875$

12. $-5\frac{1}{2} = -5.5$ $\underline{<}$ -5.05

15. $|-8| = 8$ $\underline{>}$ -8

Write an integer to represent each piece of data.

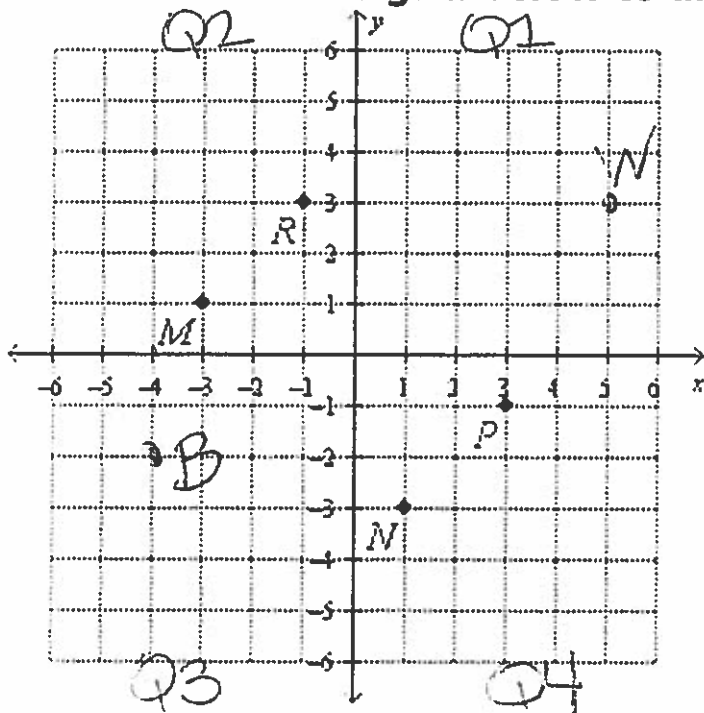
-15 16. A temperature decrease of 15 degrees

-4 17. The opposite of 4

-30 18. Descending 30 meters

+9 19. $|-9|$

Use the coordinate grid below to answer questions 20-24.



20. Which point is located at $(-3, 1)$? M

21. In which quadrant is point N? Q4

22. Place point B at $(-4, -2)$ on the grid.

23. Place point W at $(5, 3)$ on the grid.

24. Label the four quadrants and the origin on the coordinate grid.

25. Convert the following: Be sure to write fractions in the simplest form.

Fraction	Decimal
$\frac{11}{20}$	0.55
$\frac{3}{4}$	0.75
$\frac{9}{10}$	0.9
$\frac{4 \div 2}{10 \div 2} = \frac{2}{5}$	0.4
$3 \frac{47}{100}$	3.47

26. Mrs. Ashcraft makes a daily trip to the bank. On Day 1, she deposited 25 dollars. On Day 2, she withdrew 15 dollars. On Day 3, she withdrew 5 dollars. On Day 4, she just checked the balance. On Day 5, she deposited 50 dollars. Represent Mrs. Ashcraft's daily activity at the bank using integers in the table below.

Day	Daily Activity
1	+25
2	-14
3	-5
4	0
5	+50

27. The AVID classes sold sno-cones at all four lunches on Friday to raise money for a field trip to Texas A&M. They used $3\frac{1}{2}$ gallons of Tiger's Blood, $3\frac{5}{4}$ gallons of strawberry syrup, 3.3 gallons of grape syrup and 3.2 gallons of orange syrup. List the flavors in order from the greatest to the least amount sold.

Tiger's Blood, Grape, Strawberry, Orange

28. Label the subsets of numbers correctly and then classify (place) the following numbers into the most accurate subset of numbers.

Integers	Whole Numbers	Rational Numbers
----------	---------------	------------------

~~2~~ ~~$\frac{1}{6}$~~ ~~5~~ ~~$-\frac{2}{3}$~~ ~~-3.3~~ ~~0~~ ~~$-4\frac{4}{5}$~~ ~~12~~ ~~$\frac{15}{3}$~~

